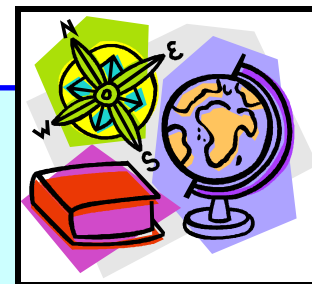


# GEOGRAPHY – FULL COURSE



## Subject Content

Students will study the following areas in Year 10 and Year 11:-

### Physical Geography

Three of the following topics:-

- The restless Earth;
- Rocks, resources and scenery;
- Challenge of weather and climate;
- Living world;
- Water on the land;
- Ice on the land;
- The coastal zone.

### Human Geography

Three of the following topics:-

- Population Change;
- Changing Urban Environments;
- Changing Rural Environments;
- The Development Gap;
- Globalisation;
- Tourism.

This is a modular GCSE. Paper 1 will be set in June of Year 10.

## Assessment

Paper 1: 1½ hours, 37.5% of total marks.  
Physical Geography

Paper 2: 1½ hours, 37.5% of total marks.  
Human Geography

Paper 3: Controlled Assessment 25% of total marks

## Skills Developed

- Pupils will develop thinking skills, independent learning and decision making skills.
- Pupils will select, use and develop a variety of techniques appropriate to geographical study and enquiry.
- Pupils will identify geographical questions and issues and establish appropriate sequences of investigations.
- Pupils will identify and collect evidence from primary sources, secondary sources; ICT based resources, then record and present it.
- Pupils will describe, analyse and interpret evidence, make decisions, draw and justify conclusions and communicate findings in ways appropriate to tasks and audience.
- Pupils will evaluate the methods of collecting, presenting and analysing evidence, as well as the validity and limitations of evidence and conclusions.

## Extra Curricular Activities and Clubs

Help with homework is available for students in the Geography room.

## Differentiation

Students will be entered into a foundation or higher paper depending on ability.

## Provision for Gifted and Talented

Competitions are advertised within the department, which are promoted by 'The Royal Geographical Society'.

## How the work in Year 10 builds on work in Year 11

GCSE Geography provides progression from KS3 to post 16 studies. It lays an appropriate foundation for further study of Geography or related subjects.

## Useful Internet Websites

[www.bbc.co.uk/bitesize](http://www.bbc.co.uk/bitesize)  
[www.multimap.co.uk](http://www.multimap.co.uk)