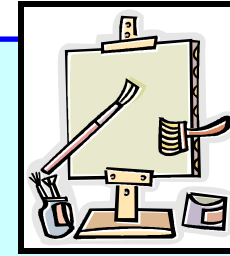




ART - GCSE



Subject Content

Edexcel Art & Design Unendorsed

- The GCSE in Art & Design is designed to be a general course, encompassing art, craft and design and to enable students to explore a range of 2 or 3 dimensional approaches to their studies, either as freestanding or related experiences.
- Work produced for this qualification will demonstrate the use of formal elements and creative skills, and give form to thinking, feeling, observation, design and ideas. Students will show evidence of trying to extend their own and others ways of seeing the world. Students will use the language of the discipline sensitively and thoughtfully to support their intentions.

Assessment

- **A01:** Develop their ideas through investigations informed by contextual and other sources, demonstrating analytical and cultural understanding.
- **A02:** Refine their ideas through experimenting and selecting appropriate resources, media, materials, techniques and processes.
- **A03:** Record ideas, observations and insights relevant to their intentions in visual and/or other forms.
- **A04:** Present a personal, informed and meaningful response demonstrating analytical and critical understanding, realising intentions and, where appropriate, making connections between visual, written, oral or other elements.

Teaching Group Arrangements

Full course pupils are taught in mixed ability groups and have one 2 hour 30 minutes lesson per week, short course have one 1 hour 15 minutes lesson per week.

Extra Curricular Activities and Clubs

- Open Studio Lunchtimes/ after school.
- Darius.
- Gallery visits are an in-built part of the course.

Provision for Gifted and Talented

- Gifted and Talented students are extended through schemes of work. They are given opportunities to work with artists in residence building relationships with their learning mentors. Pupils are encouraged to attend Darius, enter competitions, workshops and gallery visits.
- Students are given opportunities to extend personal work and enter the Arts Award.

Rewards

- End of year achievement certificates.
- Department Stickers.
- Postcards Home.
- Jack Petchey Award.
- Headmaster's Awards.
- Governors Prize – Art materials.
- Commissions.

Useful Internet Websites and Other Resources

www.tate.org.uk
www.nationalgallery.org.uk
www.saatchi-gallery.org.uk

A wide range of links available on department website.

A comprehensive list is available in the 'Student Pack' issued to all students.

How the work in Year 10 builds on the work in Year 9

All schemes of work build on prior learning and offer a greater opportunity for self-directed work.

Course Structure

- Unit 1 - Personal Portfolio/ Controlled Assessment.
- Unit 2 - Externally Set Assignment.
- Students are given a preparatory period for the exam. All work to be mounted and presented in portfolio/work journals.