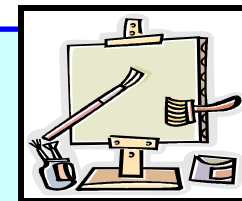


# ART - Controlled Assessment



## Syllabus: EDEXCEL 1000

The GCSE in Art & Design is designed to be a general course, encompassing art, craft and design and to enable students to explore a range of 2 or 3 dimensional approaches to their studies, either as freestanding or related experiences. Work produced for this qualification will demonstrate the use of formal elements and creative skills, and give form of thinking, feeling, observation, design and ideas. Students will show evidence of trying to extend their own and others' ways of seeing the world. Students will use the language of the discipline sensitively and thoughtfully to support their intentions.

Controlled Assessment/ Personal Portfolio - 60%  
Terminal Test - 40%

## Controlled Assessment

### Unit 1 – Personal Portfolio

The personal portfolio submitted for assessment consists of centre-devised activities, carried out by students under controlled conditions. The activities should take approximately 45 learning hours to complete. This time should not include teacher direction, demonstration, preparation of workspaces or materials, clearing or storage of work.

The Personal Portfolio accounts for 60% of the final qualification.

The work should address all four Assessment Objectives, with a maximum of 20 marks for each Assessment Objective.

**Assessment Objectives and Weightings:** - Each Assessment Objective is 25% - all Objectives must be addressed.

**A01:** Develop their ideas through investigations informed by contextual and other sources, demonstrating analytical and cultural understanding.

**A02:** Refine their ideas through experimenting and selecting appropriate resources, media, materials, techniques and processes.

**A03:** Record ideas, observations and insights relevant to their intentions in visual and/ or other forms.

**A04:** Present a personal, informed and meaningful response demonstrating analytical and critical understanding, realising intentions and, where appropriate, making connections between visual, written, oral or other elements.

**Deadlines** - Built in deadlines at the end of each project - individual tutorials, reviews and targets given.

## Externally Set Assignment

The externally set assignment is made available to centres in paper form and on the Edexcel website as secure content in January of the year of examination. The paper may be given to students as soon as it is received. Students undertake investigations and development, with approximately 20 hours of informal supervision leading to a final 10 hour sustained focus, conducted under formal supervision. This time should not include teacher direction, demonstration, preparation of workspaces or materials, clearing or storage of work.

Each year a theme is set as a suggested starting point for student work. Suggestions are given in the paper for each endorsement, together with links to appropriate resources.

The externally set assignment accounts for 40% of the final qualification.

The work should address all four Assessment Objectives, with a maximum of 20 marks for each Assessment Objective.